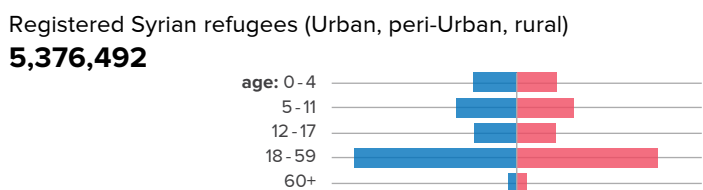
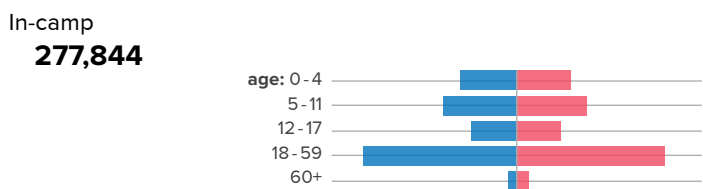
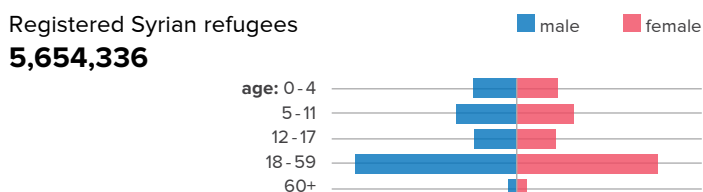


Registered Syrian Refugees in Host Countries

September 2021 / Egypt, Iraq, Jordan, Lebanon, and Turkey

Demography of registered Syrian refugees



Key figures

66.3% of people in need in the region are women or children

95% of Syrian refugees across the region reside within the host community, mainly in urban areas; 5 % reside in camps

Some 35% of children are out of school and a significant number of children are missing out on distance learning opportunities

In 2020, **over 60%** of the households reported loss of job and entire income due to the pandemic in some countries

Population of registered Syrian refugees within the region

Turkey



3,715,913
registered Syrian refugees

3,715,913
projected registered Syrian refugees by December 2021

3,715,913
estimated total number of Syrians

Iraq



249,733
registered Syrian refugees

255,000
projected registered Syrian refugees by December 2021

247,305
estimated total number of Syrians

Egypt

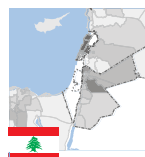


134,952
registered Syrian refugees

136,000
projected registered Syrian refugees by December 2021

500,000
estimated total number of Syrians

Lebanon

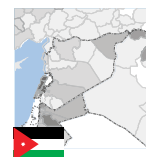


851,717
registered Syrian refugees

800,000
projected registered Syrian refugees by December 2021

1,500,000
estimated total number of Syrians

Jordan



670,364
registered Syrian refugees

633,314
projected registered Syrian refugees by December 2021

1,300,000
estimated total number of Syrians

TOTAL

5,654,336*
registered Syrian refugees as of 30 September 2021

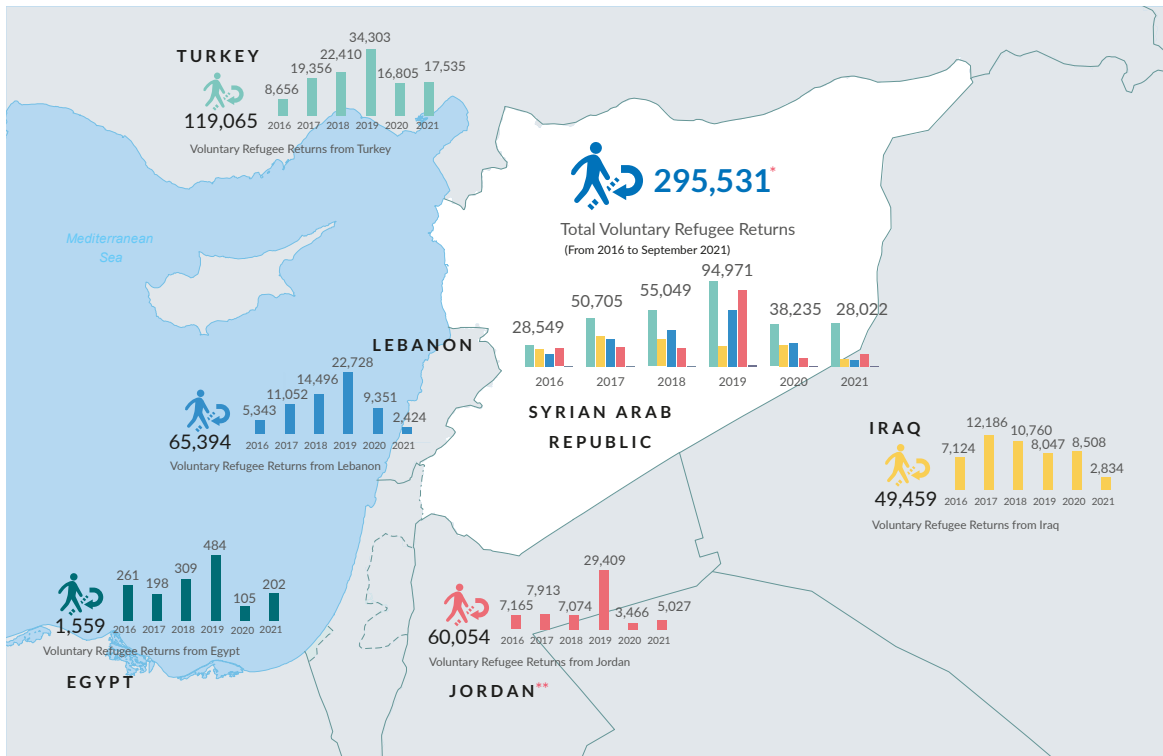
5,540,227
projected registered Syrian refugees by December 2021

7,263,218
estimated total number of Syrian refugees

* The total includes Turkey, Iraq, Egypt, Lebanon, Jordan, and North Africa
Data from UNHCR: <https://data2.unhcr.org/en/situations/syria>

Return

Voluntary Syrian Refugee Returns as Verified by UNHCR as of 30 September 2021



* The numbers reported are only those verified or monitored by UNHCR and do not reflect the entire number of returns, which may be significantly higher.

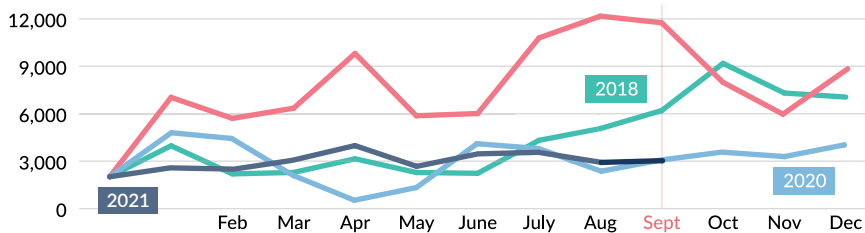
** Since the re-opening of the border on 15 October 2018, the methodology for returns data was adapted. The return data after 15 October 2018 remains tentative and is undergoing validation and re-adjustments.

Daily return average in 2021
103

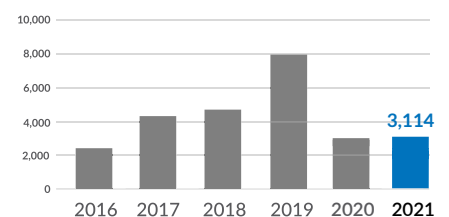
Monthly return average in 2021
3,114

Returns so far in 2021
28,022

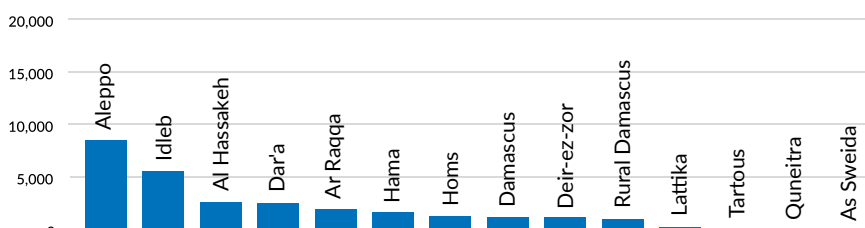
Regional Return Trends: 2018-2021



Regional Monthly Average



Returns by Governorate of Origin: September 2021



Returns by Sex & Age in 2021

